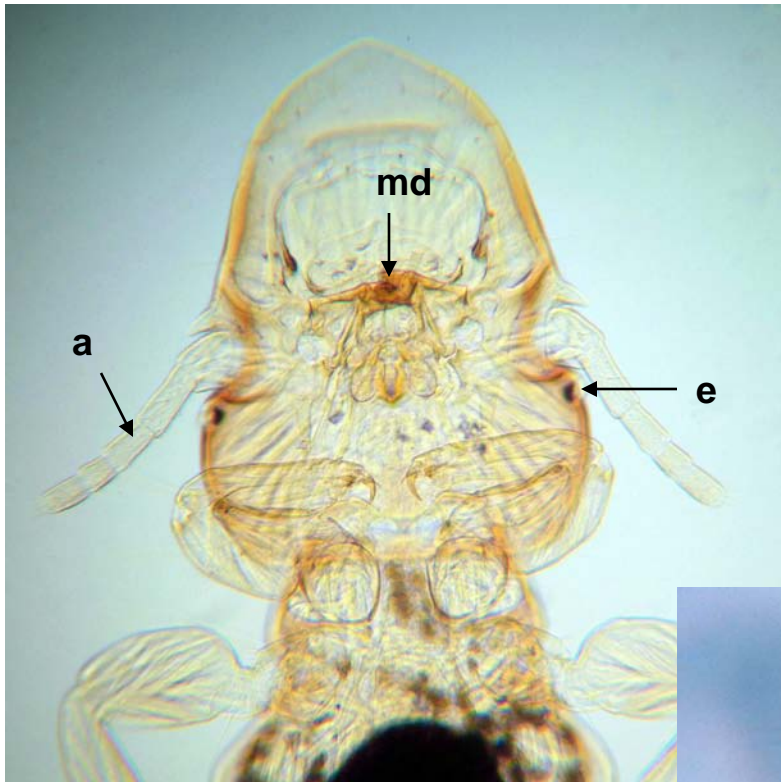


Picicola sp. male (A); *P. snodgrassi* female (B).

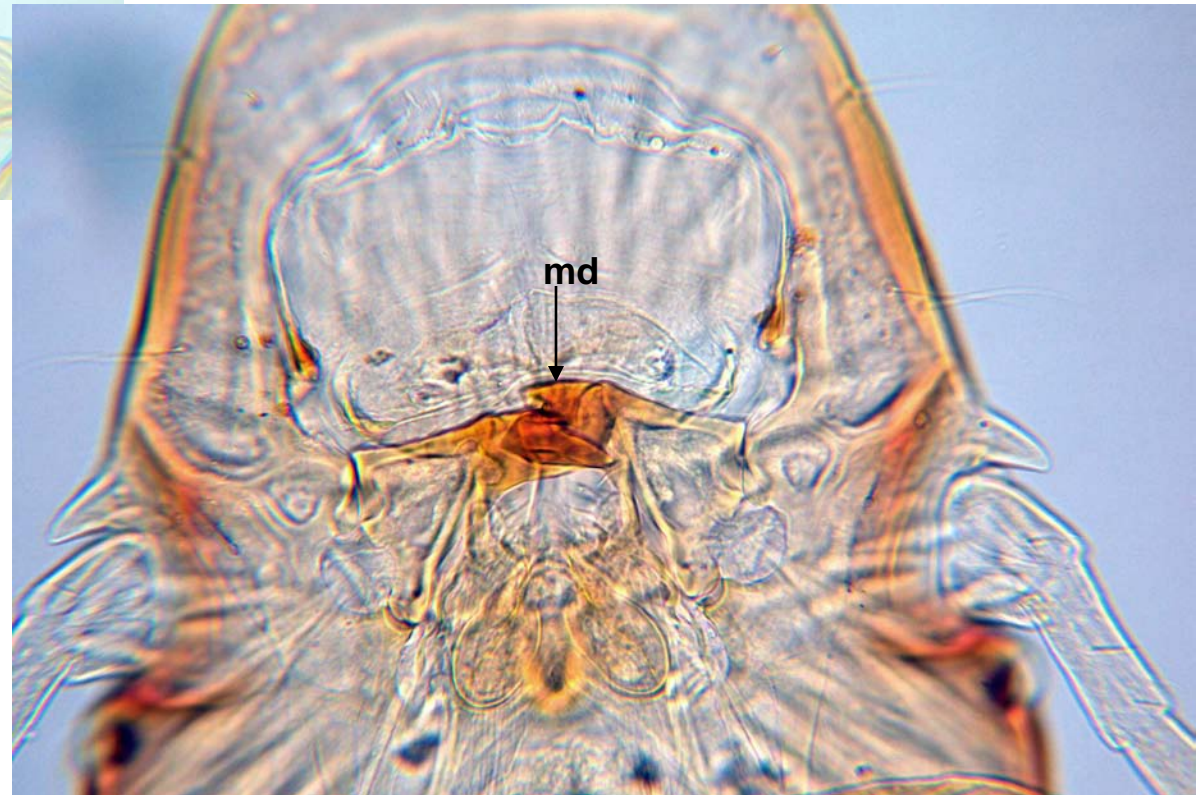


Picicola sp. male, head. Good example of an “ischnoceran” biting louse (exposed, 5-segmented antennae and absence of maxillary palps).

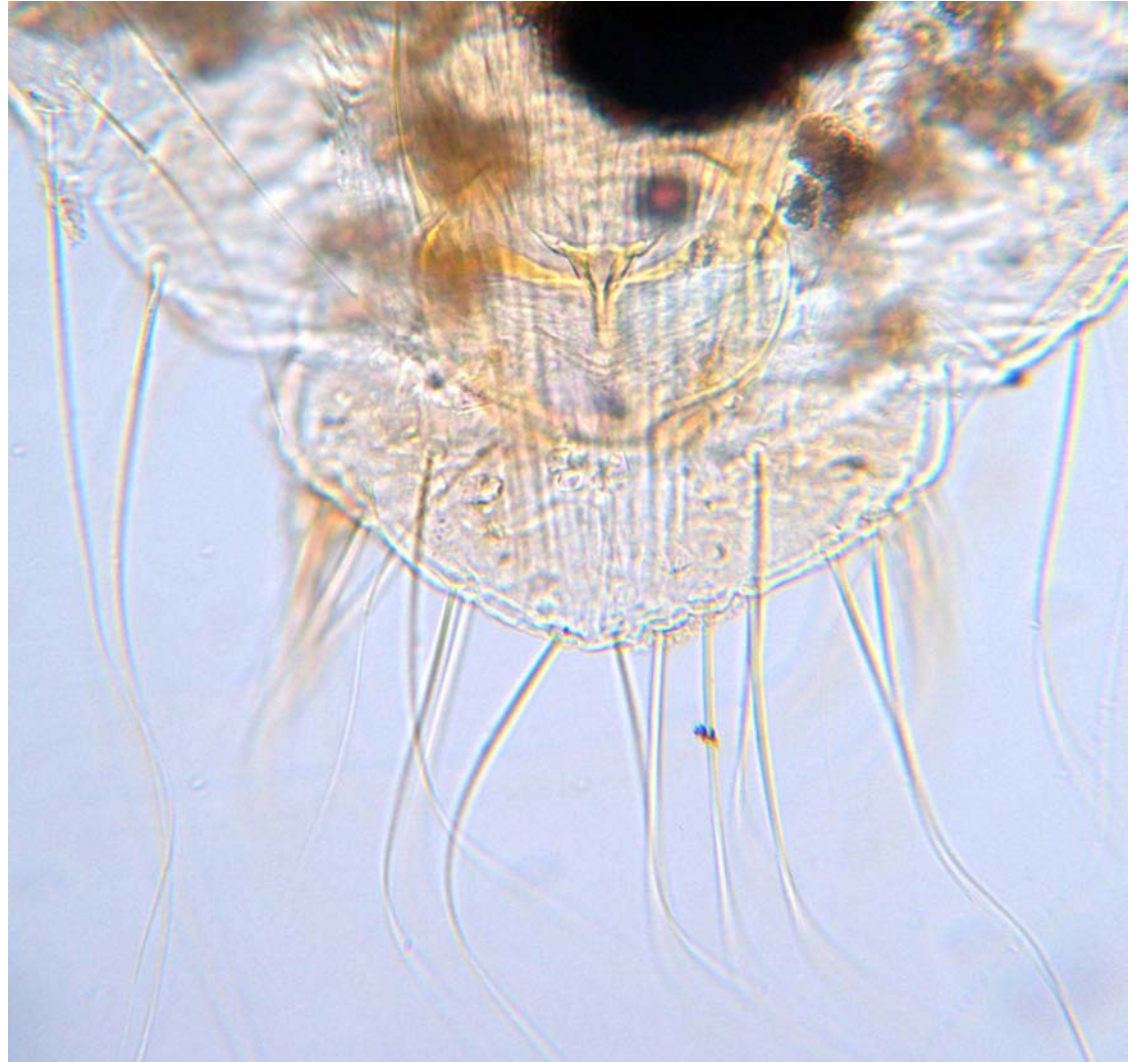


0.25 mm

Legend: a, antenna;
e, eye; md, mandible.



Picicola sp. male, genitalia.



Picicola snodgrassi female, head. Legend: md, mandibles.

